



Current News

Volume 70 Number 3 March, 2024

A monthly publication for the members of Eastern Iowa Light & Power Cooperative

Deadline is April 1...

Director nomination deadline is near

Anyone seeking to run for a position on the Eastern Iowa REC Board of Directors must have their initial nomination paperwork turned in by April 1.

Potential director candidates are asked to submit an address verification form to enable the Cooperative to ensure the potential candidate is eligible to run within the district they indicate on the form.

Nomination packets, along with information regarding the district boundary map, qualifications to seek election, director compensation, director duties, responsibilities, Standards of Conduct and characteristics of a director can be found on the Cooperative's website, www.easterniowa.com under the "My Cooperative" tab, Director Elections or call 1-800-728-1242 to request the information.

Candidates then need to complete a petition signed by at least 15 memberships of their district by April 1.

All candidates who submit qualifying petitions will then be asked to fill out a biographical form and return it to by May 15.

This information will be used for the candidate profiles which will be published on the Cooperative's website. All profiles will be published verbatim, as submitted.

The nomination process puts no limit on the number of candidates in a given district. To serve on the board:

✓ A candidate must hold an active membership and be a bonafide resident in the district he or she is to represent.

✓ A candidate cannot be in any way



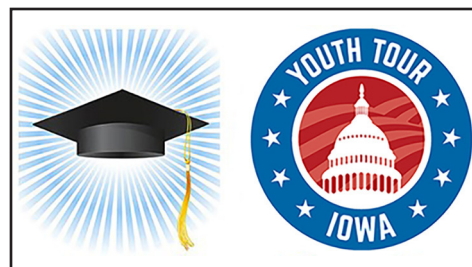
Cooperative members in District 3 cast their votes in the director election during the 2023 District meeting.

employed by or financially interested in a competing enterprise or business selling electric energy or supplies to the Cooperative, or a business primarily engaged in selling electrical or plumbing appliances, fixtures or supplies to the members of the Cooperative. ✓ No close relative of a candidate, as defined by board policy, can be employed by the Cooperative.

This nomination process in no way screens or filters potential candidates for seats on the Cooperative's board. Anyone who successfully completes the nomination papers and meets qualifications as described will be placed on the ballot.

All candidates should note the time requirements of a director are more than just the 12 monthly meetings. Directors should be prepared to devote an average of 25-30 days per year to Cooperative business-related activities.

The elections will be held during the 2024 district meetings. The incumbent directors whose terms expire are: Glenn McCulloh, DeWitt, district 1; Michael Moes, Tipton, district 2; Bill Petersen, Muscatine, district 3; Ken Purdy, Columbus Jct., district 4; and Gary Kester, Burlington, district 5.



Applications are due this month

The application deadline for two Eastern Iowa REC youth programs are this month. The deadline for the Cooperative scholarship program is March 11, 2024 and the deadline for the Youth Tour program is March 15, 2024.

The 2024 Eastern Iowa REC scholarship program includes 21 \$1,000 scholarships.

The "Bob Wiemerslage Memorial Scholarship" is awarded to a student whose parents or guardian is a member of the Cooperative and who plans to major in accounting. Wiemerslage was the Cooperative's Division Manager of Accounting until his passing in 2019.

Fifteen scholarship winners will receive a \$1,000 award that can be used to help defray the costs of attending any accredited college or university.

Five \$1,000 scholarships will be awarded to students planning to pursue a trade-related degree at a community college, technical school or powerline school.

The Cooperative's scholarship program is open to all 2024 high school seniors, whose parents or guardians are members of the Cooperative. This includes children of Cooperative directors and employees.

The 2024 Youth Tour trip to Washington, D.C. will be June 15-21. Iowa students will join other student leaders from across the nation to learn more about cooperatives, U.S. history and government.

Application can be found online: www.easterniowa.com/my-coop/community/scholarships/ and www.easterniowa.com/my-coop/community/youth-tour/.



DIRECTOR NOMINATION PETITIONS ARE DUE BY APRIL 1

NOMINATION PACKETS ARE AVAILABLE ONLINE AT WWW.EASTERNIOWA.COM UNDER THE "MY COOPERATIVE" TAB, DIRECTOR ELECTIONS OR CALL 1-800-728-1242

ELECTIONS HELD DURING 2024 DISTRICT MEETINGS

We may be looking for you or your neighbor

Eastern Iowa REC is trying to locate people and firms who have outstanding patronage refunds, deposits and/or uncashed checks. The current list is posted on the Cooperative's website: www.easterniowa.com/my-coop/community/treasure-hunt/.

If you know any of these people or firms, have them contact the Cooperative's patronage department at 1-800-728-1242.

Watch ditch fires and call before you dig

Eastern Iowa REC is asking for extra sets of eyes to look for potentially dangerous situations this spring--ditch fires.

It is that time of year, when many may be burning the weeds and grass in roadside ditches. This burning can help "clean things up," but it can also cause a great deal of trouble if the fire is allowed to burn around Cooperative poles, guy wire anchors or underground cable cabinets.

Uncontrolled fires endanger lives, damage electrical facilities and cause unnecessary interruptions in electric service. Please take care when burning ditches and keep fires away from all electrical facilities.

A diverse lineup is a winning formula

Just like a winning basketball team needs players with a balanced mix of skills, we depend on a diverse mix of fuel sources to generate the electricity we provide to you. By using a variety of fuel sources, we can make sure you have reliable power – any time you need it.

Natural gas, coal and nuclear account for about 78% of U.S. electricity generation. These energy sources are consistently available and can be "put into the game" anytime we need them.

Other potential safety hazards are signs, reflectors and other items attached to power poles. Please do not nail, staple or post any kind of material on utility poles.

This is also the time of year people begin preparations for their spring landscaping plans. You might not think twice before you push that shovel into the ground.

In many areas, homes are served by underground electric lines. If you cut into a line, not only will you probably interrupt service to your home, but you could also receive a serious shock!

Just dial 811 to start the process to ensure your project will be safely completed.

Wind, hydro and solar power account for about 19% of U.S. electricity generation. These are excellent, environmentally-friendly additions to our fuel mix. Because wind and solar can only produce electricity when the wind is blowing or the sun is shining, these are considered intermittent energy sources.

Did you know electric utilities use a diverse mix of fuel sources to provide electricity? Having a diverse "team" of fuels available ensures you have reliable power, anytime you need it.

5 STEPS FOR SAFE DIGGING

Working on an outdoor project? Careless digging poses a threat to people, pipelines and underground facilities. Always call 8-1-1 first. Here are five easy steps for safe digging:



1. NOTIFY

Call 8-1-1 or make a request online two to three days before your work begins. The operator will notify the utilities affected by your project.

2. WAIT

Wait two to three days for affected utilities to respond to your request. They will send a locator to mark any underground utility lines.



3. CONFIRM

Confirm that all affected utilities have responded to your request by comparing the marks to the list of utilities the 8-1-1 call center notified.



4. RESPECT

Respect the markers provided by the affected utilities. The markers are your guide for the duration of your project.

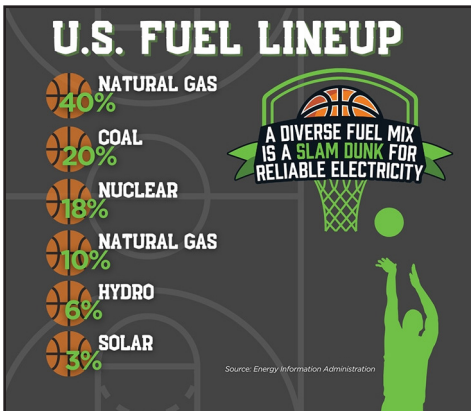


5. DIG CAREFULLY

If you can't avoid digging near the markers (within 18-24 inches on all sides, depending on state laws), consider moving your project location.



Source: call811.com



ENERGY EFFICIENCY TIP OF THE MONTH

Lengthen the life of your clothes dryer with regular cleaning. Clean the lint filter after every load, which improves air circulation and safety. Check the lint trap opening and use a vacuum to remove any lint that's fallen inside the opening.

If you use dryer sheets, check the lint filter for residue buildup. Remove any residue with hot water and a nylon brush or toothbrush. Over time, dryer sheets can leave a film on the filter, which can affect the performance of the motor.

SMART PAYMENT

Save time. Eliminate late fees. Avoid service interruptions.

Sign up for auto payments, set up your secure preferred payment method and let account management go into autopilot ... all in the palm of your hand and online.

With SmartHub, you'll be notified when your bill is due and you can pay securely online or in the app, anytime, anywhere.

1:07 Eastern Iowa Light & Power Cooperative

Report an Issue/Inquiry

EILP Outages Iowa Outages

ACCOUNT OVERVIEW

\$267.71 PAY

Bill due on May 1, 2020 (2 days).
Updated: Apr 29, 2020 1:06 PM

USAGE OVERVIEW

Your bill is 10.71% lower than last year.

0 1k 2k 3k 4k 5k

1/2020 3961 kWh

To set up a SmartHub account visit www.easterniowa.com for more information.

To make an immediate bill payment from a checking or savings account use the Pay Now application at <https://easterniowa.smarthub.coop/PayNow.html>.

Comments from the CEO

We are taking steps to harden systems for cybersecurity

Eastern Iowa REC, along with electric cooperatives across the country, recognize the evolving cyber threat landscape that poses disruptions to the nation's electric grid. As responsible providers of power to our members, electric cooperatives are taking proactive measures to secure the grid.

Cyber threats, ranging from phishing to compromised passwords, have the potential to disrupt power reliability. That's why electric cooperatives are working to stay one step ahead by continually assessing vulnerabilities, monitoring emerging threats and implementing cybersecurity defense measures. By securing the grid against cyber threats, cooperatives ensure a more reliable power supply, reducing the risk of disruptions.

Electric cooperatives are implementing multiple cybersecurity strategies to utilize a defense-in-depth approach,

emphasizing concern for our local communities and the importance of reliability for the members we serve.

Your Cooperative is deploying advanced monitoring and protection systems that continuously analyze network traffic, detect suspicious activity and alert security personnel to potential problems.

Additionally, cooperatives regularly practice security audits to identify vulnerabilities, assess risks and implement necessary updates and patches to safeguard critical infrastructure.

Recognizing that cybersecurity is a team effort, Eastern Iowa REC regularly engages with other cooperatives, industry organizations, government agencies and cybersecurity experts to share best practices, develop lessons learned and stay up to date on the latest threats. This kind of collaboration enables us to develop robust cybersecurity measures. Electric cooperatives also participate in mutual aid efforts focused on cybersecurity events. By working together, we are stronger and better prepared.

Eastern Iowa REC also understands the importance of educating all employ-

ees on the latest cybersecurity issues, which is why we provide regular training to inform Cooperative staff on best practices and the significance of adhering to security protocols. By cultivating an internal culture of cybersecurity awareness, we are improving cyber knowledge and skills for Cooperative employees.

In addition to internal measures, cooperatives are establishing dedicated cybersecurity points of contact so that members can easily identify individuals to discuss any cyber-related concerns.

Cooperative members are regularly targeted by energy scammers, whether through false claims or messages sent as emails, or phone scams from people falsely claiming to represent the cooperative. By identifying and reporting these incidents, you can help play an important role in keeping our Cooperative community safe from cyber threats and scams.

Electric cooperatives remain committed to providing reliable power to the members we serve. Our top priority is to keep your information secure and your lights on.

We will continue working hard to strengthen the grid, keep data safe and ensure the long-term well-being of our local communities. In the face of increasing cyber threats, these proactive measures provide a foundation for a robust and secure electric grid.



Kirk Trede
CEO

From the Boardroom, January, 2024

- Approved discount rate on patronage settlement of estates.
- Set interest rate on consumer deposits for 2024.
- Reviewed preliminary CIPCO patronage allocation for 2023.
- Reviewed 2024 District Meetings.
- Approved Cooperative's Revolving Loan Fund Committee.

The next board meeting will be held on March 28, 2024.

The Eastern Iowa REC Statement of Nondiscrimination

Eastern Iowa Light and Power Cooperative is the recipient of Federal financial assistance from the U.S. Department of Agriculture (USDA).

In accordance with Federal civil rights law and U.S. Department of Agriculture (USDA) civil rights regulations and policies, the USDA, its Agencies, offices, and institutions participating in or administering USDA programs are prohibited from discriminating based on race, color, national origin, religion, sex gender identity (including gender expression), sexual orientation, disability, age, marital status, family/parental status, income derived from a public assistance program, political beliefs, or reprisal or retaliation for prior civil rights activity, in any program or activity conducted or funded by USDA (not all bases apply to all programs). Remedies and complaint filing deadlines vary by program or incident.

Persons with disabilities who require alternative means of communication for program information (e.g., Braille, large print, audiotape, American Sign Language, etc.) should contact the responsible Agency or USDA's TARGET Center at (202) 720-2600 (voice and TTY) or contact USDA through the Federal Relay Service at (800) 877-8339. Additionally, program information may be made available in languages other than English.

Eastern Iowa Light & Power Cooperative is an equal opportunity provider and employer. The person responsible for coordinating this organization's non-

discrimination compliance efforts is Kirk W. Trede, Chief Executive Officer.

To file a program discrimination complaint, complete the USDA Program Discrimination Complaint Form, AD-3027, found online at http://www.ascr.usda.gov/complaint_filing_cust.html, at any USDA office, or write a letter addressed to USDA and provide in the letter all of the information requested in the form.

To request a copy of the complaint form, call (866) 632-9992. Submit your completed form or letter to USDA by: (1) mail: U.S. Department of Agriculture, Office of the Assistant Secretary for Civil Rights, 1400 Independence Avenue, SW, Washington, D.C. 20250-9410; (2) fax: (202) 690-7442; or (3) email: program.intake@usda.gov.

USDA is an equal opportunity provider, employer, and lender.

OUTDOOR BATTERY-OPERATED EQUIPMENT REBATE

The first day of Spring is March 19. Get ready for all your yard projects with new battery-operated equipment.

Eastern Iowa REC offers rebates on a variety of equipment:
Electric Mowers • Electric Snow Blowers • Electric Bicycles •
Electric Leaf Blowers

- Electric Chainsaws • Electric Power Washers
- Electric Pruners • Electric Trimmers



ALL REBATE FORMS CAN BE FOUND ONLINE AT:
WWW.EASTERNIOWA.COM OR CALL
AN ENERGY ADVISOR 1-800-728-1242.

BEWARE OF SCAM CALLS



Do not provide any information or agree to immediate payment; instead hang up and check with the Cooperative by calling 1-800-728-1242. Eastern Iowa REC never makes phone calls demanding immediate payment.

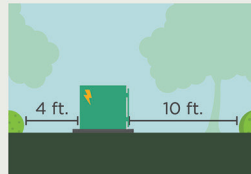
3 Ways to Help Limit Tree Trimming

Did you know electric utilities are required to trim trees and other types of vegetation that grow too close to overhead power lines? We know you love your trees, and we will do everything we can to avoid trimming them. Here's how you can help:

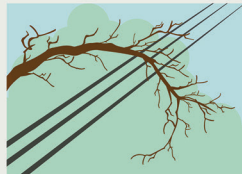
1. Plant trees in the right place. Trees that will be <40 ft. should be planted at least 25 ft. away from power lines (>40ft. should be at least 50 ft. away).



2. Don't block pad-mounted transformers. Plant shrubs at least 10 ft. away from transformer doors and 4 ft. from transformer sides.



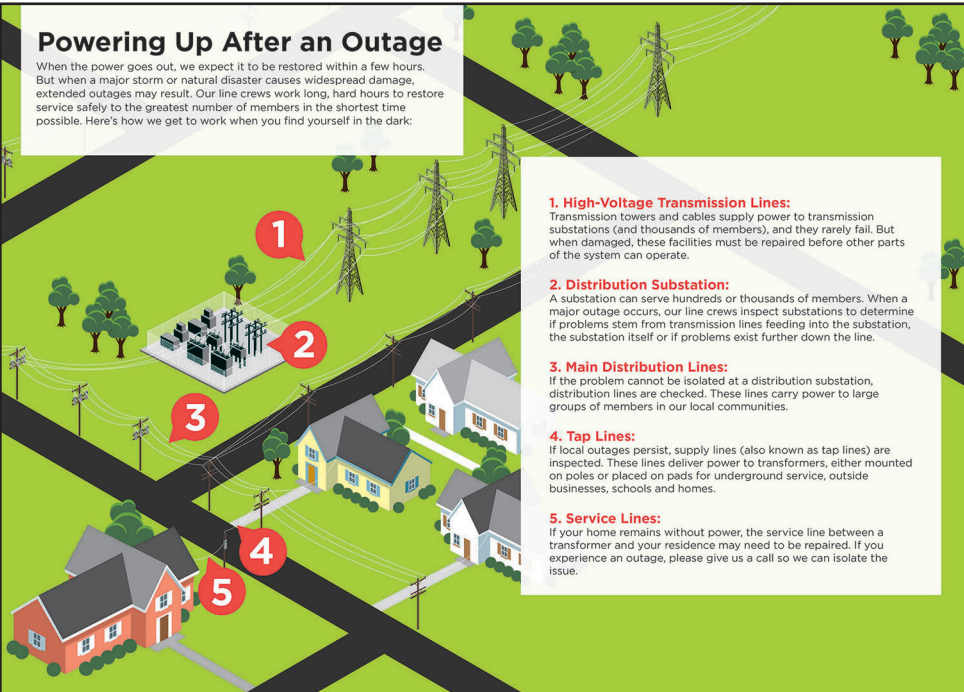
3. Report dangerous branches. If you spot a tree or branch that is dangerously close to power lines, please let us know.



Trimming improves safety for all. Let's work together to enjoy the beauty of trees and reliable electricity.

Powering Up After an Outage

When the power goes out, we expect it to be restored within a few hours. But when a major storm or natural disaster causes widespread damage, extended outages may result. Our line crews work long, hard hours to restore service safely to the greatest number of members in the shortest time possible. Here's how we get to work when you find yourself in the dark:



1. High-Voltage Transmission Lines:

Transmission towers and cables supply power to transmission substations (and thousands of members), and they rarely fail. But when damaged, these facilities must be repaired before other parts of the system can operate.

2. Distribution Substation:

A substation can serve hundreds or thousands of members. When a major outage occurs, our line crews inspect substations to determine if problems stem from transmission lines feeding into the substation, the substation itself or if problems exist further down the line.

3. Main Distribution Lines:

If the problem cannot be isolated at a distribution substation, distribution lines are checked. These lines carry power to large groups of members in our local communities.

4. Tap Lines:

If local outages persist, supply lines (also known as tap lines) are inspected. These lines deliver power to transformers, either mounted on poles or placed on pads for underground service, outside businesses, schools and homes.

5. Service Lines:

If your home remains without power, the service line between a transformer and your residence may need to be repaired. If you experience an outage, please give us a call so we can isolate the issue.

Current News Monthly Quiz

Quiz Winners:

Ron Beckman,
West Burlington

Thor Christensen,
Muscatine

Lois Feddersen,
Clinton

Jerry Bean,
Ainsworth

Mail your answers to Current News, P.O. Box 3003, Wilton, IA 52778 or email their answers to info@easterniowa.com. Be sure to include your name, address and Eastern Iowa REC account number on all quiz answer entries.

Four winners will be drawn from all submissions with the correct answers. The winners will receive a \$25 bill credit.

Question 1

How many member signatures do you need to complete a director nomination petition?

Question 2

What percentage of electricity in the U.S. is generated by nuclear power?

Question 3

How far away should you plant things from the doors of a pad-mounted transformer?

Name

Address

REC Account

Current News



BOARD OF DIRECTORS: Kathrine Wunderlich, president; Ken Purdy, vice president; Kurt Olson, secretary; Michael Bixler, treasurer; Henry Bentley, assistant secretary; Joel Carstensen, Allan Duffe, Tom Hotz, Gary Kester, Glenn McCulloh, Michael Moes, Bill Petersen, Robert Schneider Jr., Mike Shuger, Bradley Weiss.

Kirk Trede
CEO

Jim Williams
Communications Director

DeWitt
500 South Fifth St.

Wapello
101 Surrey Drive.

Lone Tree
309 W. Commercial St.

Wilton
1705 West Third St.

Call toll free, 1-800-728-1242.

General Information.....info@easterniowa.com
Billing Questions.....billing@easterniowa.com
Service Questions.....member.service@easterniowa.com

This institution is an equal opportunity provider and employer.